
Micro - Aggression

What are micro-aggressions and micro-invalidations

Coco & April

How Micro - aggressive environment can change a person



Aggression

Demeaning



Ignoring



Seperation



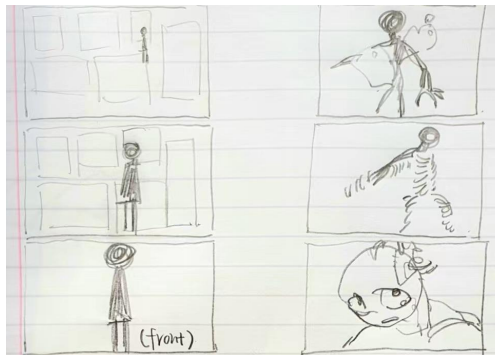
春天是什么样子的？

- AI animation
- Various Styles
- Inclusive imagery

Logline

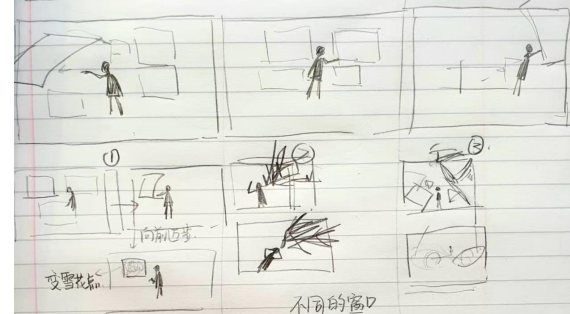
Environment

Using AI animation to produce background



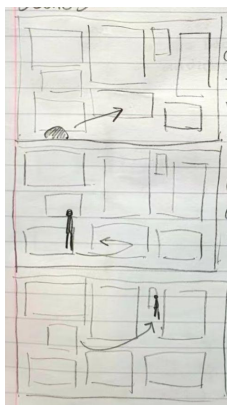
Effect

New people joining into the environment and loses themselves due to microaggression

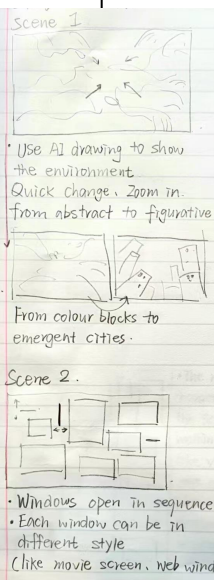


Solution

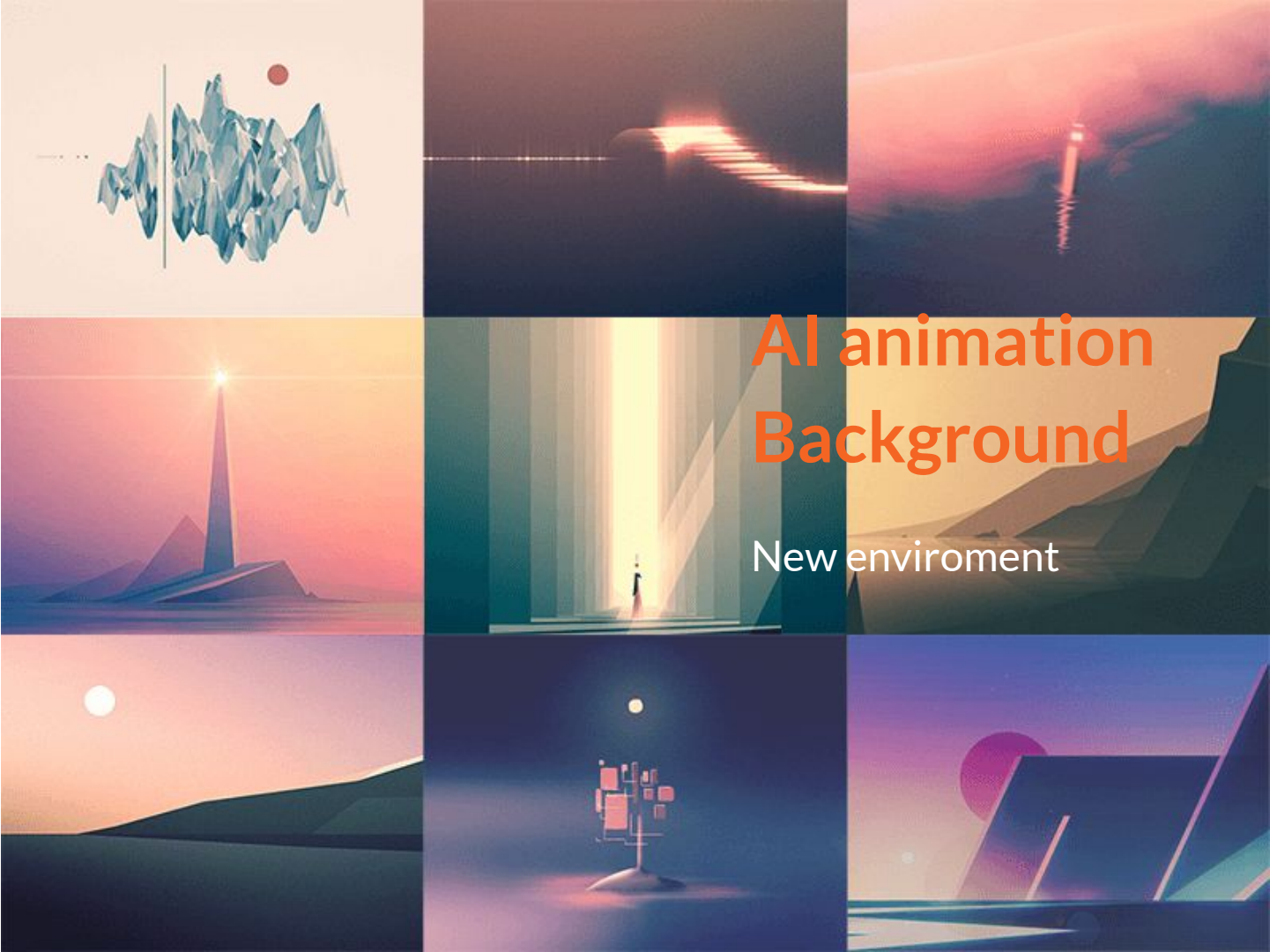
The idea of inclusiveness joins (represented by a circle) representing empathy and respect. Influences others and helps other to regain themselves



Using windows of 2D animation to present human views

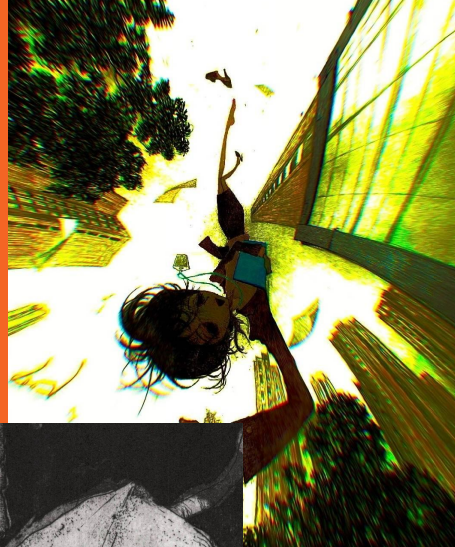


—



AI animation Background

New enviroment

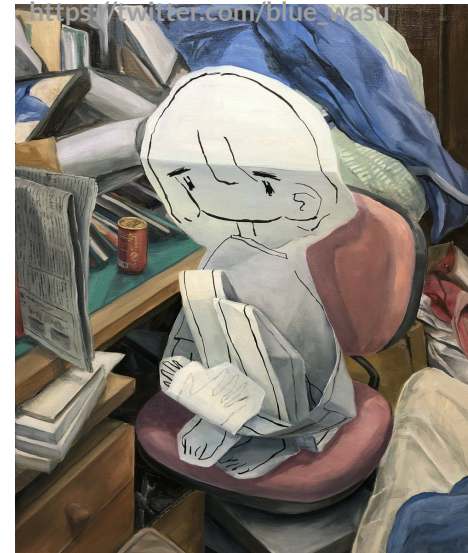
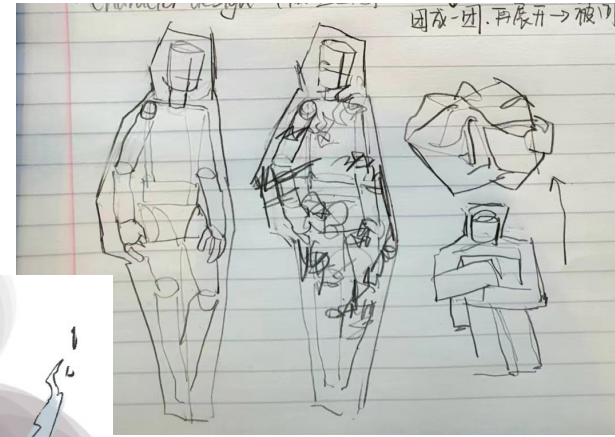
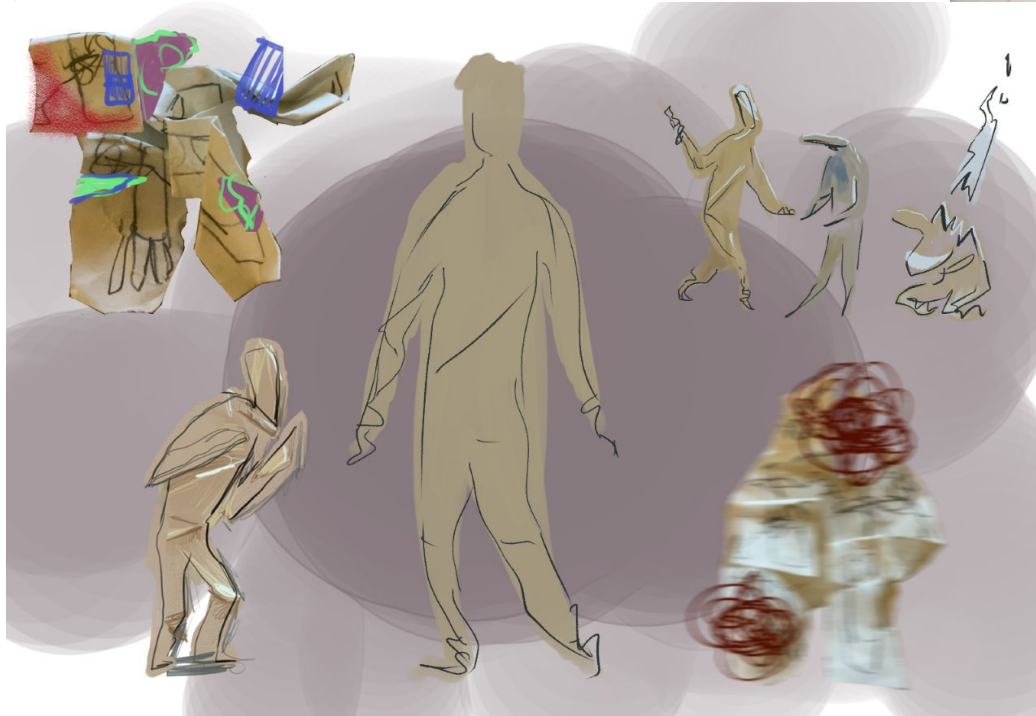
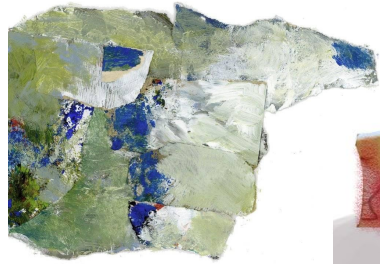


2D animation

Each style represent a individual, everyone is different yet complimenting.



Character Moodboard

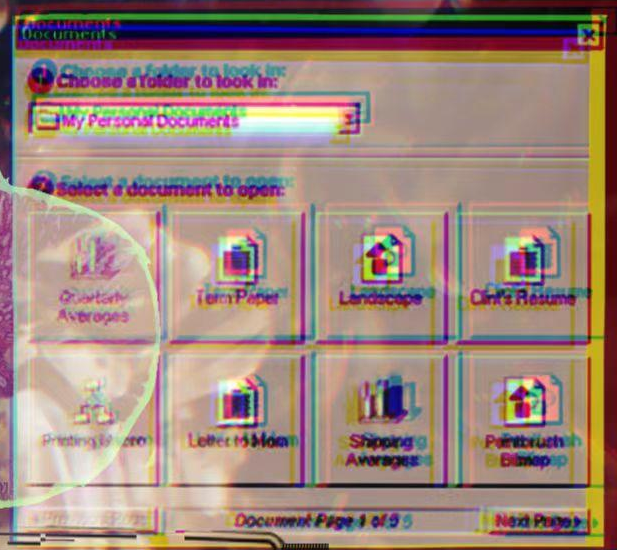


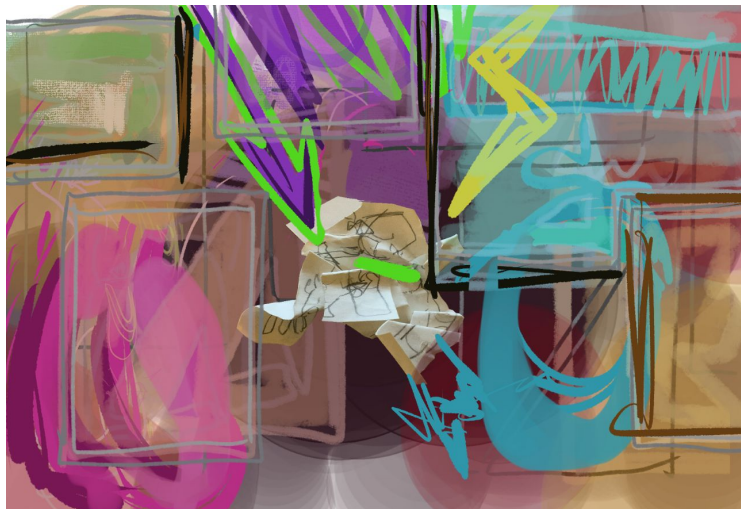


A brand new style!

A new person joins this community, and had been rejected due to their difference

More and more
people has to let go of
themselves to fit in







But!

As inclusive awareness
grow, people learned
to be empathetic.

Style shift

Freeing of the mind,
everyone becomes
themselves

3D back grounds

四十天之后，
所有死去的生命都在



Thank you!